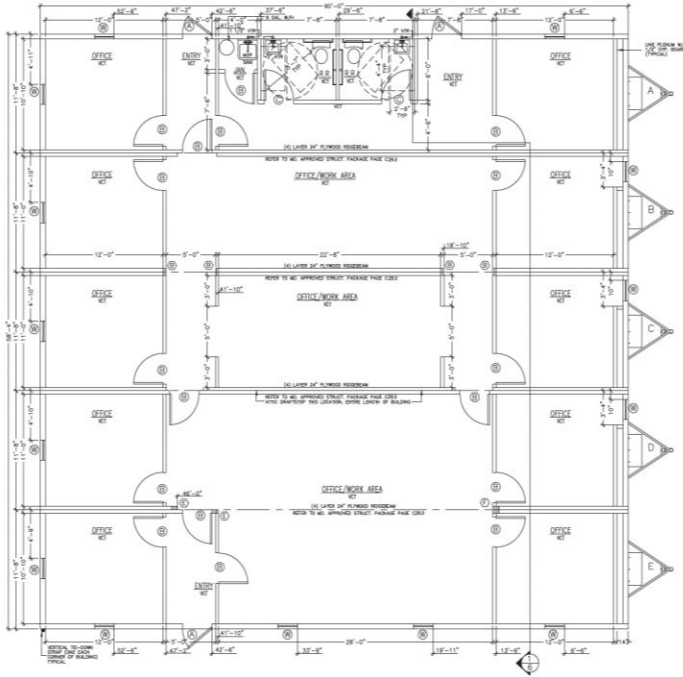


Client: Joseph B. Fay

Pennsylvania Turnpike Bridge Project

Construction Field Offices



In January 2023, Joseph B. Fay began work on the Pennsylvania Bridge Turnpike Project at Beaver River Ridge, with an estimated completion date of September 2025. This major infrastructure project involves building two new parallel cast-in-place segmental bridges to replace a steel deck truss bridge constructed in 1953. The new eastbound and westbound bridges will span 1,645 feet, with 385-foot spans, and will sit 20 feet higher than the existing structure. The project encompasses a two-mile stretch of the turnpike, covering a total area of 264 acres.

Joseph B. Fay contracted Triumph Modular due to their expertise and flexibility in providing modular space solutions. Initially, Joseph B. Fay considered leasing options for their project office needs. However, given the project's duration and budget restraints, Triumph Modular proposed a purchase option with a guaranteed residual buyback. This solution offers the customer the required space with the budget flexibility needed for the project.

Triumph Modular provided a custom 5-piece, 3,600-square-foot modular office building to serve as the project headquarters, which was delivered to the site in less than 60 days. The installation process was swift and efficient, including tie-downs, seamed finished flooring, and vinyl skirting. Within two weeks, the modular office was fully operational, providing a comfortable and functional workspace for the project team. The interior was customized to meet the specific needs of the Joseph B. Fay team, demonstrating Triumph Modular's ability to tailor solutions to client requirements.

The success of the initial installation led to an expanded partnership between Joseph B. Fay and Triumph Modular. Within three months of the original setup, Joseph B. Fay added two additional 8x32 mobile offices for on-site inspectors. Furthermore, they purchased an 8' x 40' office container for use as a field material testing laboratory. This expansion underscores the client's satisfaction with Triumph Modular's products and services, particularly noting the quality of the buildings, the speed of installation, and the high level of customer service. The flexibility and scalability of Triumph Modular's solutions proved invaluable in meeting the evolving needs of this complex infrastructure project.