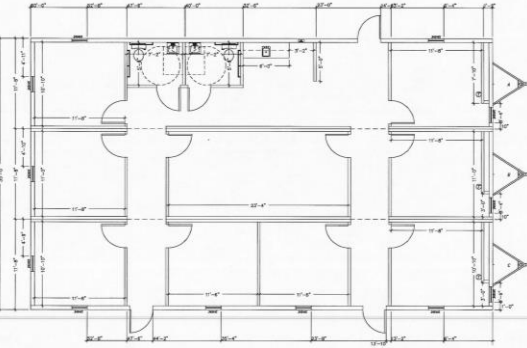


Client: Joseph B. Fay

PennDOT Pathways Program

Temporary Modular Space Solutions



Triumph Modular's collaboration with Joseph B. Fay has resulted in significant opportunities, with the awarding of infrastructure projects throughout Pennsylvania. This partnership has played a vital role in advancing our market position as a leader in modular construction, serving infrastructure projects.

The partnership's success is evident in the tailored modular solutions provided for the North Fork Bridge project in Brookville, PA. Triumph Modular supplied two 2,160 sq ft three-piece modular buildings, one for Joseph B. Fay and the other for Bridging Pennsylvania, a 1,440 sq ft double-wide unit for the engineering company Volkert, and an 8' x 32' building for inspectors. The design of the three-piece modular building for Joseph B. Fay was modified from the original fixed floor plan after the installation. This was because the customer needed more private office space in the center of the building. Our BLOCS™ wall system accommodated this need by creating two additional offices and a conference room at a minimal cost.

Joseph B. Fay contracted Triumph Modular several months before the project start date. Due to our strong customer relationship, we were able to hold units for an extended period. Once the contract documents were finalized, the units were rapidly deployed. Block-level installation, floor seam, and vinyl skirting were completed in two weeks.

These leased modular units offer flexible and cost-effective space solutions for long-term projects, demonstrating the practical benefits of modular construction in large-scale infrastructure development. Using modular buildings allows the Joseph B. Fay team to be closer to the job site, making their workforce more efficient, a significant advantage for all industries, not just construction. This collaboration showcases how Triumph Modular's expertise complements Joseph B. Fay's heavy civil construction capabilities, resulting in more efficient and timely project execution.

Project Details

Location
Brookville, PA

Square Feet
3,600

Modular Units
5

Lease Term
48