

TRIUMPH
M O D U L A R
A TECNOFAST COMPANY®



PRODUCT CATALOG








	3	About Us
	4	Office Trailers
	9	BLOCS™ Modular Building System
	10	BLOCS™ Wall System
	11	Office Containers
	14	Storage Containers
	15	The Solutions- Furniture & Accessories



Table of
CONTENTS

The story of

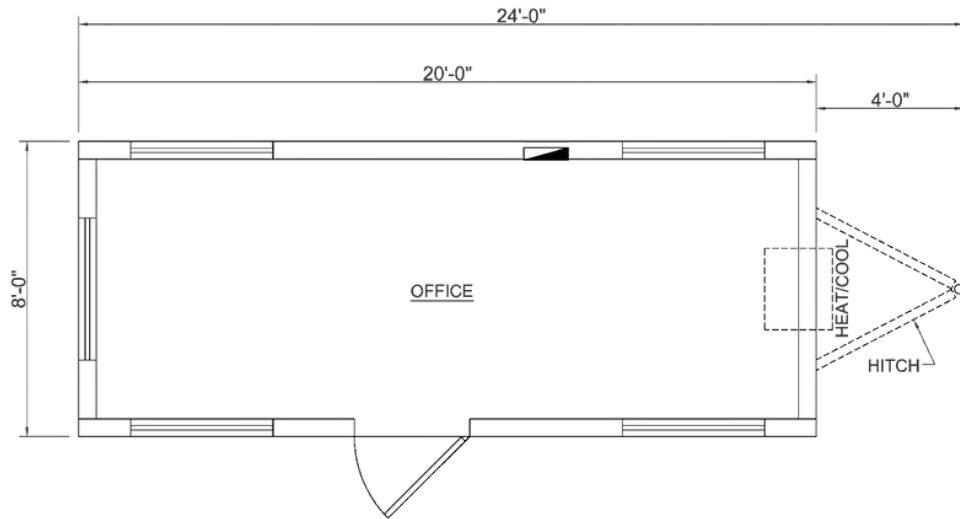
TRIUMPH



Triumph Modular is a leader in the Northeast Region for leasing mobile offices, modular buildings, and storage containers. As an innovator in the modular industry, we provide high-quality temporary and permanent buildings equipped with energy-efficient elements and options to make your space as turnkey as possible. With more than 40 years of experience, Triumph Modular has worked in a multitude of industries delivering quality products, keeping customer relationships at the heart of our operation.

In September 2021, Triumph Modular was acquired by Tecno Fast[®]. With 26 years of history in the market, Tecno Fast[®] is a Chilean-based company and the Latin American leader in design, automated manufacturing, lease, and sale of modular space. Tecno Fast[®] and Triumph Modular share the same vision to deliver space solutions that improve people's lives through innovation and design.

OFFICE TRAILER



8' x 24'

Size

- 24' Long (including hitch)
- 20' Box Size
- 8' Wide
- 7' Ceiling
- 160 Square Feet

Electric

- LED Ceiling Lights
- LED Exterior Light
- 120/240V Single Phase
- 60 Amp Breaker
- USB Port Outlets

Heating/Cooling

- 10,000 BTU Thru-Wall Heat/Cool

Interior Finish

- Luma Beige VCP
- VCT Cool White Tile Floors
- Gypsum Ceiling

Exterior Finish

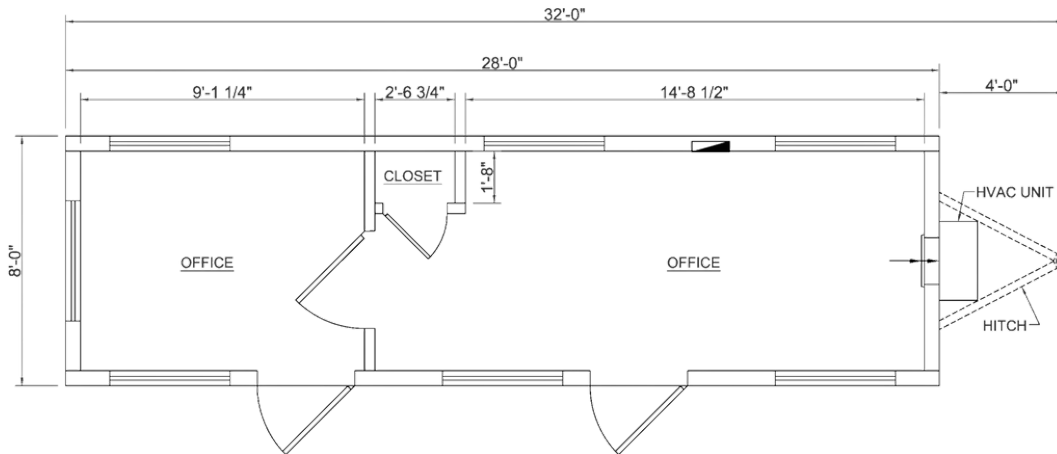
- Smart Panel Wood Siding
- I-Beam Frame
- J-Rail Roof Edge Gutters
- R-21 Insulation

Windows/Doors

- Double Insulated Vinyl Windows
- (5) Horizontal Slider Windows
- (1) Steel Door with Standard Locks

* Floor plans and specifications may vary and are subject to in stock availability.

OFFICE TRAILER



8' x 32'

Size

- 32' Long (including hitch)
- 28' Box Size
- 8' Wide
- 7' Ceiling
- 224 Square Feet

Electric

- LED Ceiling Lights
- LED Exterior Lights
- Motion Sensor Light Switches
- 120/240V Single Phase
- 60 Amp Breaker
- USB Port Outlets

Heating/Cooling

- 1-Ton Wall Mounted Bard
- Thermostat - 7-Day Programmable
- HVAC - 11 EER Rating

Interior Finish

- Luma Beige VCP
- VCT Cool White Tile Floors
- Gypsum Ceiling
- (1) Private Office
- (1) Closet

Exterior Finish

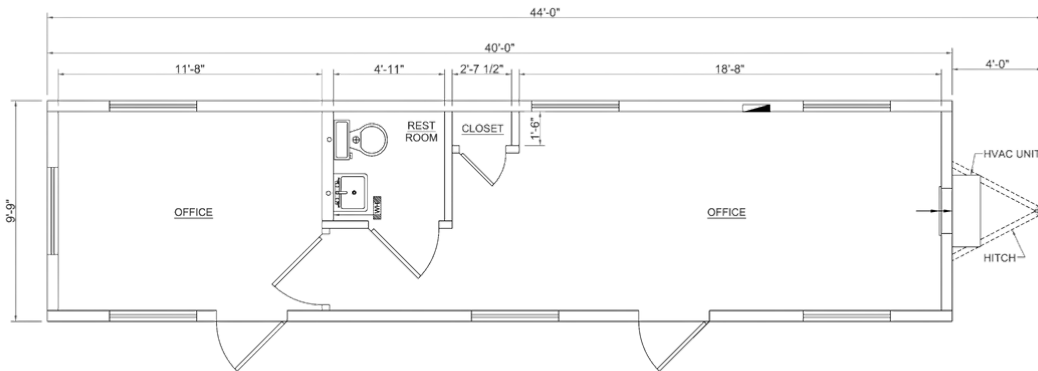
- Smart Panel Wood Siding
- I-Beam Frame
- J-Rail Roof Edge Gutters
- R-21 Insulation

Windows/Doors

- Double Insulated Vinyl Windows
- (7) Horizontal Slider Windows
- (2) Steel Doors with Standard Locks

★ Floor plans and specifications may vary and are subject to in stock availability.

OFFICE TRAILER



10' x 44'

Size

- 44' Long (including hitch)
- 40' Box Size
- 10' Wide
- 8' Ceiling
- 400 Square Feet

Interior Finish

- Luma Beige VCG
- VCT Cool White Tile Floors
- Gypsum Ceiling
- (1) Private Office
- (1) Restroom

Electric

- LED Ceiling Lights
- LED Exterior Lights
- Motion Sensor Light Switches
- 120/240V Single Phase
- 100 Amp Breaker
- USB Port Outlets

Exterior Finish

- Smart Panel Wood Siding
- I-Beam Frame
- J-Rail Roof Edge Gutters
- R-21 Insulation

Heating/Cooling

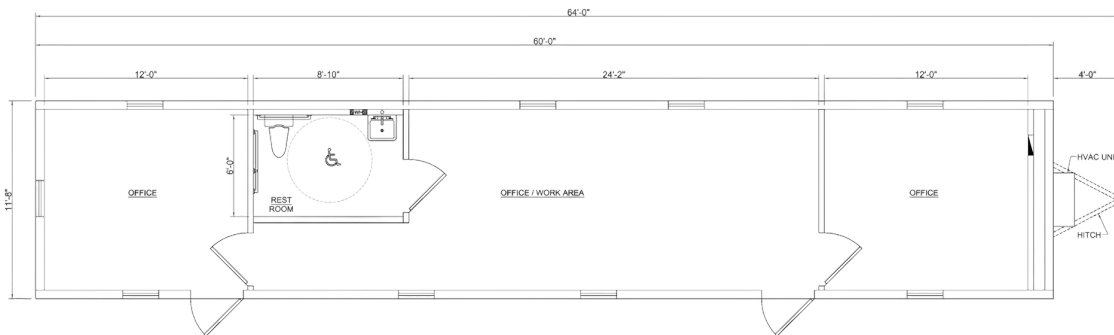
- 2-Ton Wall Mounted Bard
- Thermostat - 7-Day Programmable
- HVAC - 11 EER Rating

Windows/Doors

- Double Insulated Vinyl Windows
- (7) Horizontal Slider Windows
- (2) Steel Doors with Standard Locks

* Floor plans and specifications may vary and are subject to in stock availability.

OFFICE TRAILER



12' x 64'

Size

- 64' Long (including hitch)
- 60' Box Size
- 12' Wide
- 8' Ceiling
- 720 Square Feet

Electric

- LED Ceiling Lights
- LED Exterior Lights
- Motion Sensor Light Switches
- 120/240V Single Phase
- 125 Amp Breaker
- USB Port Outlets

Heating/Cooling

- 3-Ton Wall Mounted Bard
- Thermostat - 7-Day Programmable
- HVAC - 11 EER Rating

Interior Finish

- Luma Beige VCG
- VCT Cool White Tile Floors
- Gypsum Ceiling
- (2) Private Offices
- (1) Restroom w/closet

Exterior Finish

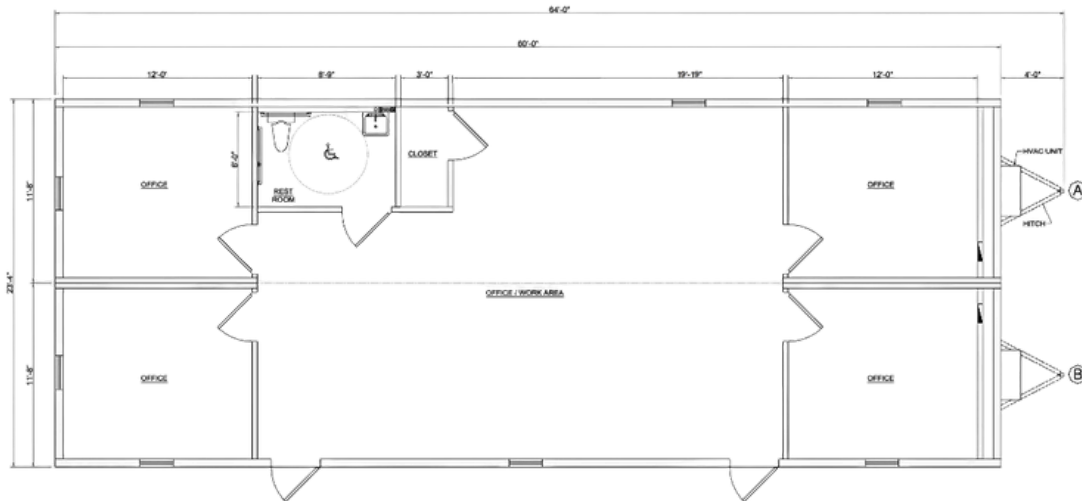
- Smart Panel Wood Siding
- I-Beam Frame
- J-Rail Roof Edge Gutters
- R-21 Insulation

Windows/Doors

- Double Insulated Vinyl Windows
- (9) Horizontal Slider Windows
- (2) Steel Doors with Standard Locks

★ Floor plans and specifications may vary and are subject to in stock availability.

OFFICE TRAILER



24' x 64'

Size

- 64' Long (including hitch)
- 60' Box Size
- 24' Wide
- 8' Ceiling
- 1,440 Square Feet

Electric

- LED Ceiling Lights
- LED Exterior Lights
- Motion Sensor Light Switches
- 120/240V Single Phase
- (2) 125 Amp Breakers
- USB Port Outlets

Heating/Cooling

- (2)- 3 Ton Wall Mounted Bard
- (2) Thermostats - 7-Day Programmable
- HVAC - 11 EER Rating

Interior Finish

- Luma Beige VCG
- VCT Cool White Tile Floors
- Gypsum Ceiling
- (4) Private Offices
- (2) Restrooms w/closet

Exterior Finish

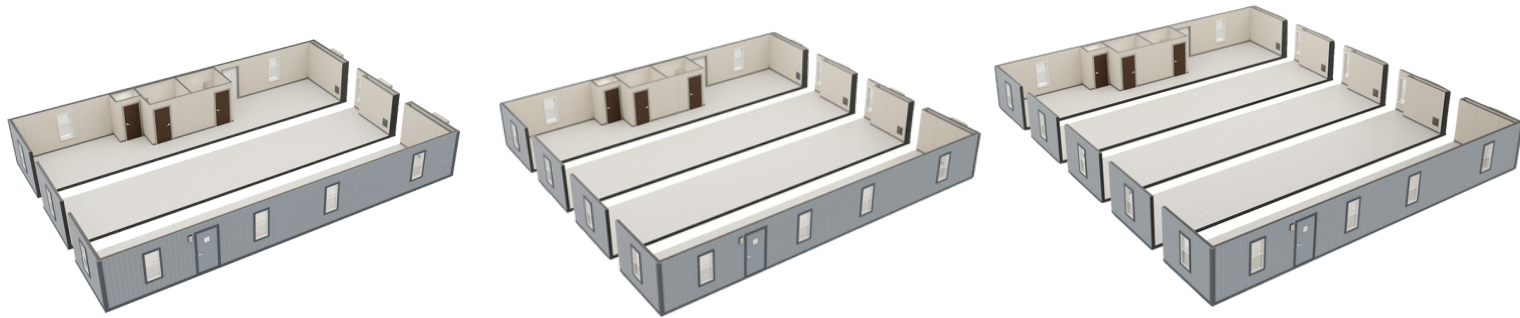
- Smart Panel Wood Siding
- I-Beam Frame
- J-Rail Roof Edge Gutters
- R-21 Insulation

Windows/Doors

- Double Insulated Vinyl Windows
- (8) Horizontal Slider Windows
- (2) Steel Doors with Standard Locks

* Floor plans and specifications may vary and are subject to in stock availability.

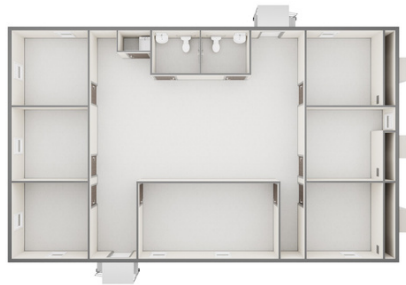
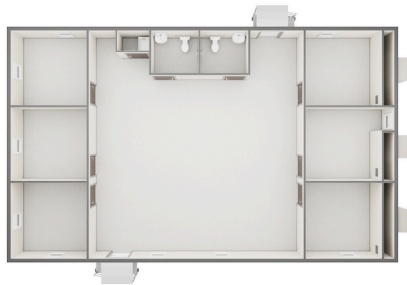
BLOCS™ MODULAR BUILDING SYSTEM



The BLOCS™ Advantage:

BLOCS™ is a completely customizable, modular building that offers a limitless, open-concept design. BLOCS™ is built on a perimeter frame with a clear span truss and do not require any columns or supporting walls. For our customers, BLOCS™ allows versatility when planning office layouts, deciding where meeting areas are created, and even when selecting furniture. Reach out to one of our sales representatives to start your design today.

BLOCS™ WALL SYSTEM



The BLOCS™ Wall Advantage:

BLOCS™ Modular Walls can be used to reconfigure the interior of the space upon installation—or even after. BLOCS™ walls are installed on a track system, which enables them to be added or removed quickly. Depending on your needs, wall sections can include both doors and windows. Electrical raceways are used between panels of the wall system, which makes dropping electrical wires to power the outlets a fast and easy process.

OFFICE CONTAINER



8' x 20'

Size

- 20' Long
- 8' Wide
- 160 Square Feet

Electric

- Surface Mounted LED Lights
- 120/240V Single Phase
- (4) Interior Outlets
- Supports a 25 KW Generator

Heating/Cooling

- Baseboard Heat
- Thru-Wall AC Unit-Electric
- (1) Wall Thermostat

Interior Finish

- VCT Flooring
- VVG Interior Walls
- Rigid Foam Insulation

Exterior Finish

- Reinforced Corrugated Steel

Windows/Doors

- (2) Vinyl Windows w/ Security Screens
- (1) Steel Door with Standard Locks

OFFICE CONTAINER



8' x 40'

Size

- 40' Long
- 8' Wide
- 320 Square Feet

Electric

- Surface Mounted LED Lights
- 120/240V Single Phase
- (8) Interior Outlets
- Supports a 25 KW Generator

Heating/Cooling

- Baseboard Heat
- (2) Thru-Wall AC Unit-Electric
- (2) Wall Thermostats

Interior Finish

- VCT Flooring
- VVG Interior Walls
- Rigid Foam Insulation

Exterior Finish

- Reinforced Corrugated Steel

Windows/Doors

- (4) Vinyl Windows w/ Security Screens
- (2) Steel Doors with Standard Locks

* Floor plans and specifications may vary and are subject to in stock availability.

OFFICE CONTAINER



8' x 40' COMBO

Size

- 40' Long
- 8' Wide
- 16' Office Space
- 24' Storage Space
- 128 Square Feet Office
- 192 Square Feet Storage

Electric

- Fluorescent Ceiling Lights
- (4) Interior Outlets
- Supports a 25 KW Generator

Heating/Cooling

- Baseboard Heat
- (1) Thru-Wall AC Unit-Electric

Interior Finish

- VCT Flooring
- VVG Interior Walls
- Rigid Foam Insulation

Exterior Finish

- Reinforced Corrugated Steel

Windows/Doors

- (2) Vinyl Windows w/ Security Screens
- Double Cargo Doors
- (1) Steel Door with Standard Locks

* Floor plans and specifications may vary and are subject to in stock availability.

STORAGE CONTAINERS



20'

Specifications

- Maximum Payload: 48,130 lbs
- Dimensions: 20' x 8' x 8' 6"
- Door Openings (Width):
7' 8 1/8"
- Door Openings (Height):
7' 6 1/32"
- Internal Length: 19' 4 13/64"
- Internal Width: 7' 8 19/32"
- Internal Height: 7' 10 3/8"



40'

Specifications

- Maximum Payload: 59,140 lbs
- Dimensions: 40' x 8' x 8' 6"
- Door Openings (Width):
7' 8 1/16"
- Door Openings (Height):
7' 5 25/32"
- Internal Length: 39' 5 3/4"
- Internal Width: 7' 8 1/2"
- Internal Height: 7' 10 1/16"

FURNITURE SOLUTIONS

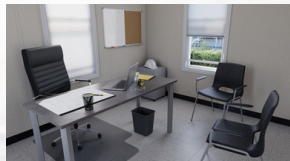
Office Solutions

Express

- Standard Desk- 60"x 30"
- High Back Executive Chair
- (2) Stackable Chairs
- Floor Chair Mat
- Small Trash Can
- White/Cork Board Combo
- Over The Door Coat Hook
- File Cabinet
- Office Supply Starter Kit

Business

- (1) L-Shape Desk- 60"x 72"
- High Back Executive Chair
- (2) Stackable Chairs
- Floor Chair Mat
- Small Trash Can
- White/Cork Board Combo
- Over The Door Coat Hook
- File Cabinet
- Office Supply Starter Kit



***Office Supply Starter Kit includes:**

Graph Paper Pads, Pens, Dry Erase Markers and Eraser, Desk Calendar, Trash Bags, Electrical Strip and a File Box

Bistro Solutions

Express

- 6' Folding Table
- Mini Refrigerator
- Keurig Duo Coffee Maker
- Microwave
- Large Trash Can
- Convenience Starter Kit

Business

- 48"x 24" Desk
- Full Size Refrigerator
- Keurig Duo Coffee Maker
- Microwave
- Large Trash Can
- Convenience Starter Kit



***Convenience Starter Kit includes:**

12 Pack K Cups, Stirring Sticks, Ground Coffee, Creamer, Sugar Packs, Coffee Cups and Lids, Paper Towels, Coffee Filters, Trash Bags, Electrical Strip, and a File Box

FURNITURE SOLUTIONS

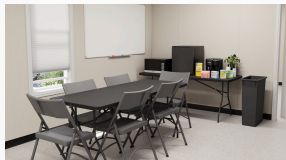
Breakroom Solutions

Express

- (2) Folding Tables
- (8) Folding Chairs
- Large Trash Can
- White Board
- Mini Refrigerator
- Keurig Duo Coffee Maker
- Microwave
- Convenience Starter Kit

Business

- (4) Folding Tables
- (20) Folding Chairs
- Large Trash Can
- White Board
- Full Size Refrigerator
- Keurig Duo Coffee Maker
- Microwave
- Convenience Starter Kit



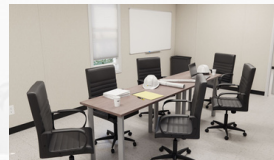
Conference Room Solutions

Express

- (2) 48"x 24" Desks
- (6) Mid Back Manager Chairs
- Large Trash Can
- White Board
- Convenience Starter Kit

Business

- 8' Conference Table
- (8) High Back Executive Chairs
- Large Trash Can
- White Board
- Convenience Starter Kit



***Convenience Starter Kit includes:**

12 Pack K Cups, Stirring Sticks, Ground Coffee, Creamer, Sugar Packs, Coffee Cups and Lids, Paper Towels, Coffee Filters, Trash Bags, Electrical Strip, and a File Box

FURNITURE SOLUTIONS

Workstation Solutions

Express

- Standard Desk- 60" x 30"
- Mid Back Executive Chair
- Acrylic Privacy Panels
- Floor Chair Mat
- Small Trash Can
- File Cabinet
- Office Supply Starter Kit

Business

- L-Shape Desk- 60"x 72"
- High Back Executive Chair
- Acrylic Privacy Panels
- Modesty Panels
- Floor Chair Mat
- Small Trash Can
- (2) File Cabinet
- Office Supply Starter Kit



Reception Solution

- L-Shape Desk- 60"x 72"
- High Back Executive Chair
- Acrylic Privacy Panels
- Modesty Panels
- Floor Chair Mat
- Small Trash Can
- (1) File Cabinet
- (3) Stackable Chairs
- (1) End Table
- (1) Coat Rack
- Office Supply Starter Kit



***Office Supply Starter Kit includes:**

Graph Paper Pads, Pens, Dry Erase Markers and Eraser, Desk Calendar, Trash Bags, Electrical Strip and a File Box

FURNITURE & ACCESSORY SOLUTIONS

Planning Solution

- 60" Plan Table
- Adjustable Height Drafting Stool
- Plan Rack with Six Clamps
- Chair Mat



Air Purifier Solutions

AirDoctor UltraHEPA Air Purifier Features:

- 100 Times more effective with state-of-the-art UltraHepa™
- Dual-action carbon/gas trap/VOC filter
- Quiet performance
- Covers large rooms



Data Solution

4G/5G Business Class Router

- PLUG AND PLAY - instant connectivity.
- UNLIMITED DATA - for video conferencing, web browsing, large graphic files, etc.
- ULTRA-FAST 5G - wireless internet for high-speed data transfer for effortless web browsing, file sharing, and data-intensive tasks.
- CUTTING EDGE SOLUTION - for up to 25 users.
- POWERFUL PERFORMANCE - for large spaces.
- 4G LTE & 5G- includes unlimited data per month



OTHER SOLUTIONS

Generators

25kVA

- Interim power source
- Powers a 8' x 24' to 12' x 64' sized mobile office
- 28-hour run time without refueling
- Runs on diesel fuel
- Unit Size including hitch 10'8" x 5'4"
- Daily, weekly, monthly rental availability
- Installation provided by Triumph Modular

55kVA

- Interim power source
- Powers a double-wide (24' x 64') mobile office
- 24-hour run time without refueling
- Runs on diesel fuel
- Unit Size including hitch 12'5" x 4'8"
- Daily, weekly, monthly rental availability
- Installation provided by Triumph Modular



ENTRY & SECURITY SOLUTIONS



Express Entry Solution



Business Entry Solution

- Boot Brush and Mat come standard with this package



ADA Ramps

- Switchback
- Straight



Security Solutions

- Door Bars
- Window Screens



WWW.TRIUMPHMODULAR.COM 1-800-257-2536